

theZOO
LOUISVILLE

SUMMER 2022

Trunkline



INCREDIBUGS

PRESENTED BY Great Clips®

GREETINGS

Summer is here and it's BIGGER than ever! At the Louisville Zoo, we are dedicated to providing a safe environment to help you and your loved ones unplug and re-connect with the natural world. We have lots of exciting news to share including updates about your favorite animals, upcoming events and more.

Below are a few of our featured stories:



7

INCLUSION MAKES SENSE

Learn how — and why — the Zoo earned Sensory Inclusive™ Certification and is building a more inclusive space for all families.



10

BIG, BEAUTIFUL AND BUGGY

Get an up-close, impressive look at the world's most prolific creatures with IncrediBUGS!



11

THE BIRD WHISPERER

Meet the Zoo's new bird curator James McKinney and find out about many new fine-feathered friends!

Zoo Address

1100 Trevilian Way
Louisville, KY 40213

Telephone

Administrative Offices: (502) 459-2181

FAX: (502) 459-2196

Education: (502) 238-5358

Membership Office: (502) 459-2287

Zoo Hours — Open Daily

Through – Sept. 18, 2022
10 a.m. – 5 p.m. (*stay until 6 p.m.*)

Sept. 19 – March 18, 2023
10 a.m. – 4 p.m. (*stay until 5 p.m.*)

Early Close: Saturday, Aug. 27, 2022
Zoo closes at 2 p.m. (*Brew at the Zoo*)

*Check website for hours,
early closings & special notices.*

*Open year round except Thanksgiving,
Christmas and New Year's Day.*

Admission

General admission tickets and memberships can be purchased at the Zoo or in advance online.

Children 2 and under
receive free regular admission.

Visit Us Online

louisvillezoo.org

Editorial: Heather Dishon,
Jennifer Kemnitz and
Joseph Thompson

Designer: Jennifer Kemnitz,
Robert Kemnitz

Photographers: Heather Dishon, Dan Dry,
McKenzie Gollar, Stephanie Green, Robert
Kemnitz, John Klapheke, James McKinney,
Kyle Shepherd, Michael Stephens, Jonathan
Roberts, Bobbi Sheridan, Joseph Thompson
and Bill Wine.

Contributors: Kim Allgeier, Noah Barnes,
Stephanie Bromback, Heather Dishon, Kelly Grether,
Zoli Gyimesi, Lori Hagest, Jennifer Kemnitz,
Terri Lenahan-Downs, Megan Miller, Adam Shaft,
Kyle Shepherd, Diane Taylor, Steve Taylor, Joseph
Thompson and Dan Maloney.

Trunkline is published three times a year by the Louisville Zoological Garden, Dan Maloney, Director. The Louisville Zoo, a nonprofit organization and the state zoo of Kentucky, is dedicated to bettering the bond between people and our planet by providing excellent care for animals, a great experience for visitors and leadership in scientific research and conservation education. The Zoo, an agency of Louisville Metro Government, is accredited by the Association of Zoos and Aquariums (AZA).

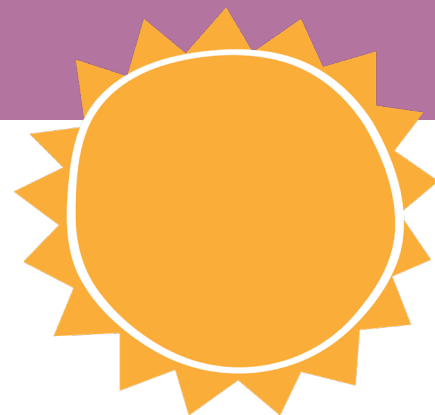
ASSOCIATION
OF ZOOS &
AQUARIUMS

Kentucky
UNBRIDLED SPIRIT

SAFE
SAVING ANIMALS
FROM EXTINCTION



LETTER FROM THE DIRECTOR



Summer is a super special season at the Zoo!

Spring babies, like our new zebra filly and the Canada lynx kittens, are growing fast, delighting guests with their energy and antics. Zoo campers and their counselors in their matching t-shirts, are out and about in full force exploring the grounds and discovering our creatures. And predictably, our Splash Park is the coolest, most fun-filled, popular destination anywhere in the Zoo.

While I grew up in New Jersey, it's been more than 25 years since I experienced a summer this far north. During my stints in New Orleans, Australia and Florida, I observed some seasonal changes, but it's really the middle to upper regions, like Kentuckiana, that burst with life as the warmer weather sets in.

Living away from where I grew up helped me to appreciate the remarkable lifecycles that I tended to take for granted. For example, warblers and wrens, thrashers and thrushes, and lots of other birds, risk everything each year, heading south as the cold weather sets in and then coming back north in the spring.

Why do these little pilgrims embark on annual journeys filled with energy-sapping headwinds, hungry hawks and housecats, and buildings whose windows create dangerous and deadly mirages?

It's all about the remarkable explosion of leaves, flowers and grasses powering huge numbers of insects. These billions of bugs bring the birds back to favored North American nesting sites with rich hunting grounds full of protein-filled flies, beetles, moths, ants and other arthropods. Throughout the Summer, overworked parents are feeding millions of ravenous, open-mouthed chicks lots of tasty bugs to get them all fledged in time for their first fall migration.

As an homage to the arthropods who nourish the birds, pollinate our crops, breakdown our refuse, and provide sustenance for so many other animals, we are featuring IncrediBUGs through 18 September 2022. Guests will be delighted by giant-sized, animatronic versions of some of the most iconic and interesting arthropod species.

Monarch butterflies in congregation, a dung beetle in mid-roll, a poised peacock jumping spider, flashing fireflies, and, of course, no regional celebration of our little friends would be complete without a great, big stink bug to enjoy!

Summer at Louisville Zoo; come for your favorite resident animals and IncrediBUGs, stay for Splash Park and the refreshing slushies and ice cream. What a super fun way to spend your day!

See you soon at the Zoo!

Dan

Your Zoo's Director





Start Your Adventure Early

Beat the crowds this summer! During July, members can take advantage of early access to the Zoo each morning at 9:30 a.m. Members can also enjoy our Splash Park beginning at 9:30 a.m. Monday thru Friday.

Take Us With You

If you're traveling this summer, remember to take advantage of the AZA's Reciprocity Program with other accredited zoos! Get free or discounted admission at more than 150 zoos and aquariums across the country, including the Cincinnati Zoo, Nashville Zoo and many more!

See the full list of participating members at aza.org/reciprocity.

Summer Is a Great Time For ADOPTS!

The Animals Depend On People To Survive (ADOPTS) program supports our animal ambassadors and the world-class care they receive all year round. You can adopt (symbolically!) a favorite Zoo animal for yourself or someone you love and help us take a bite out of the \$600,000 spent annually on animal enrichment and feeding.

Learn more about ADOPTS packages and benefits at louisvillezoo.org/adopts or call us at (502) 459-2287.

Important Member News

Go Virtual

Never worry about forgetting your membership card again!

Be sure to set up your virtual membership card on your mobile device before you visit. By using the Louisville Zoo's FREE virtual card app, you're helping us reduce our impact on the environment, too!

Once you've downloaded our app, you'll need to activate your virtual card. Contact us at (502) 459-2287 or zoomembership@louisvilleky.gov to receive your verification code. Or stop by any Member Services location on your next visit.

Prefer to carry a physical card? While we do not mail our cards, we'll be happy to issue you a replacement card at the Zoo's front ticket windows on your next visit.

Remember, as a Zoo member, you can bypass the ticket windows and head straight to the gate with your membership card!

Early Closing Notices

Brew at the Zoo and Wine Too – Saturday, August 27th. Closing at 2 p.m., exit by 3 p.m.

Questions? Suggestions? Feedback?

Contact us at: (502) 459-2287
zoomembership@louisvilleky.gov

Follow us @LouisvilleZoo on Facebook and Twitter, and @LouisvilleZooOfficial on Instagram for the latest Zoo news!

Get Ready for the Ultimate *Experience*

Saturday, July 30 (Africa)

Saturday, August 6 (Islands)

Saturday, August 13 (Africa)

Sunday, September 11 (Islands)

If you are an experience-level member or higher, you and everyone on your plan is invited to attend one of our exclusive events this summer. Visit the Zoo after hours and meet amazing keepers and animals from our Africa or Islands exhibits — plus, enjoy themed entertainment and discounted treats!

To RSVP, watch your inbox for your special invitation. If you need to update your email address or you'd like us to resend the RSVP link, contact us at (502) 459-2287 or zoomembership@louisvilleky.gov.



Not an Experience Level Member? Upgrade at Any Time!

Just pay the difference between your current plan and your desired higher level! We're happy to help you switch — call us at (502) 459-2287 or stop by our front ticket windows on your next visit. To learn more about membership levels and benefits, visit louisvillezoo.org/member-benefits.



ZOO BUCKS

The Louisville Zoo is pleased to offer members quarterly coupons with various Zoo offerings like guest admission and activities. We hope you enjoy the following limited-time promotional offers.

Please check the expiration dates and restrictions on the coupons.

ADMISSION

BUY ONE GET ONE FREE: ROPES COURSE

One time use. Coupon must be forfeited at time of redemption. Valid Louisville Zoo Membership and photo ID required.

Discount cannot be used with any other offers, discounts or after-hour events including "Boo at the Zoo."



theZOO
LOUISVILLE

Expires 8/31/2022

ADMISSION

BUY ONE GET ONE FREE: LORIKEET NECTAR

One time use. Coupon must be forfeited at time of redemption. Valid Louisville Zoo Membership and photo ID required.

Discount cannot be used with any other offers, discounts or after-hour events including "Boo at the Zoo."



theZOO
LOUISVILLE

Expires 8/31/2022

FOOD

FREE REGULAR FOUNTAIN DRINK WITH PURCHASE OF AN ENTRÉE AT THE AFRICAN OUTPOST OR WILD BURGER

One time use. Valid Louisville Zoo Membership and photo ID required.

Not valid during after-hours events including "Boo at the Zoo."

Discount cannot be used with any other offers or discounts.

theZOO
LOUISVILLE

Expires 8/31/2022

FOOD

FREE POPCORN WITH PURCHASE OF A SOUVENIR ICEE OR SOUVENIR FOUNTAIN DRINK

One time use. Valid Louisville Zoo Membership and photo ID required.

Not valid during after-hours events including "Boo at the Zoo."

Discount cannot be used with any other offers or discounts.

theZOO
LOUISVILLE

Expires 8/31/2022

Come see what makes us A SUB ABOVE®



Over 2,000 locations open and in development nationwide!

jerseymikes.com

LOCATED 1 MILE FROM ZOO!

3013 Poplar Level Road • Louisville, KY • 502-263-7002

**BUY ANY GIANT SUB
& (2) 22 oz. FOUNTAIN DRINKS
GET A REGULAR SUB FREE!**
*of equal or lesser value



VALID ONLY AT 3013 POPLAR LEVEL RD. LOCATION

Hurry! Offer expires 8/31/22. One coupon per person per visit per day. Not to be combined with other offers. No cash value. Coupon redeemable in person. Offers with promo codes may also be redeemed in our app. **2330**



PROMO CODE
LSVLLZ0030

**BUY 2 GIANT SUBS, GET 3rd
GIANT FOR \$3.99**
*of equal or lesser value



VALID ONLY AT 3013 POPLAR LEVEL RD. LOCATION

Hurry! Offer expires 8/31/22. One coupon per person per visit per day. Not to be combined with other offers. No cash value. Coupon redeemable in person. Offers with promo codes may also be redeemed in our app. **2338**



PROMO CODE
LSVLLZ0038

FREE KIDS MEAL

mini sub, small drink & cookie



VALID ONLY AT 3013 POPLAR LEVEL RD. LOCATION

Hurry! Offer expires 8/31/22. One coupon per person per visit per day. Not to be combined with other offers. No cash value. Coupon redeemable in person. Offers with promo codes may also be redeemed in our app. **2374**



PROMO CODE
LSVLLZ0074



We take our work home with us.

PriceWeber is delighted to be part of the Louisville Zoo family.



priceweber.com

Inclusion Makes Sense

Louisville Zoo Achieves Sensory Inclusive™ Certification

Visiting the Zoo on any given day is a full sensory experience. The sounds of the siamang throat boom from the Islands and birds cawing in the South America area. The bright sunshine glances off the water in Glacier Run. A gentle breeze flutters through your hair. And the smells.... Well, there's quite a variety of smells.

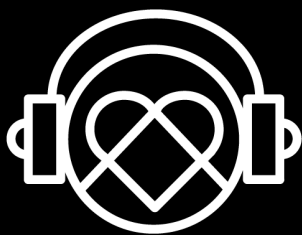
But for individuals who have difficulty processing sensory information, these stimuli can quickly become overwhelming. They and their families may have an uncomfortable experience at the Zoo, or worse, are too afraid to come.

With the help of community advocates, the Zoo recognized a tremendous opportunity — a chance to expand the population we serve by intentionally engaging children and adults who have sensory needs.

What is sensory processing?

Sensory processing is the method our nervous system uses to recognize, organize and make sense of sensory inputs.

You're probably familiar with the five external senses: hearing, sight, smell, touch and taste. There are also three internal sensory inputs: interoception, vestibular and proprioception.



Sensory Inclusive Location



Interoception is the perception of sensations from inside the body, such as pain, body temperature and emotions. These feelings can be difficult to express whether you have a disability or not.

Vestibular is the system that controls our balance and movement in everyday activities and is regulated through the inner ear canals. People with vestibular sensitivities may experience dizziness or have difficulty doing things that require balance, like riding an elevator.

Proprioception is the feedback we receive from our muscles and joints that lets us know where our body is in space. Someone with a proprioception disorder might lean against a wall for support or use a weighted lap pad.

People with sensory needs have difficulty receiving or responding to information from one or multiple sensory inputs — and the responses can be significant when the senses are overstimulated or understimulated. For example, individuals who experience Sensory System Dysregulation are particularly sensitive to a specific input, such as loud noises, which

can lead to anxiety in public spaces. Someone who is not receiving enough vestibular input may express discomfort through additional movement like running, spinning or hand flapping.

These sensory processing challenges can affect people of all ages. While often part of the diagnosis for individuals with autism, PTSD,

anxiety, ADHD, traumatic brain injury, Down Syndrome, Dementia or Parkinson's, a sensory processing disorder can also be a stand-alone condition. It's sometimes referred to as an "invisible disability" because it can be hard to detect.

What does it mean to be Sensory Inclusive certified?

Last summer, the Zoo began exploring a partnership with KultureCity, a national non-profit that helps organizations rethink accessibility for all individuals with unique abilities. As part of the Sensory Inclusive certification process, KultureCity conducted a full site review and provided recommendations for improvements.

1 in 6 individuals in the U.S. has a sensory processing need. – KultureCity

continued on page 8

Today, nearly 90% of Zoo staff, including full-time, part-time and seasonal employees, have completed KultureCity's online training. In the future, we hope to extend this training to volunteers and docents. The Zoo's food service partner, SSA, is also planning to participate.

Environmental modifications include updated way-finding signage and signs alerting guests to strong sensory experiences, such as odors in Gorilla Forest or low lighting in the HerpAquarium. The new map on the Main Plaza also identifies "Quiet Areas" and "Headphone Zones" for individuals with noise sensitivities.

Families can check out a free sensory bag at the stroller and wheelchair rental window for use while they're at the Zoo. The bag includes headphones for loud areas, fidget tools and a visual "feeling thermometer" cue card for non-verbal communicators. If you have any questions about how to use these tools in the park, just ask a staff member!

Before coming to the Zoo, you can also get an overview of the grounds from our "social story," available on our website and the KultureCity app. The story visually describes what to expect on your visit so you can plan an enjoyable experience for everyone in your group.

continued on page 9



A Place Where Every Child Belongs

Nine-year-old Henry Hinson likes to show other kids what he can do.

What started as a conversation between Henry's mom, Erin, and retired Zoo director John



Walczak about the mulch in the playground near the African Outpost turned into something much deeper.

"Inclusion isn't the same as accessibility," Erin explained. "Regular mulch might meet ADA requirements, but have you ever tried to navigate a wheelchair through it?"

Thanks to advocates like Henry and Erin, and with support from Metro Council and many generous donors in the community, the Zoo has undertaken significant efforts to ensure every visitor can have a safe and positive experience.

The opening of the redesigned Outpost playground in 2021 is a hallmark of these efforts. Not only does the playground include music, sensory play panels and features for inclusive side-by-side play, the mulch is now a rubber surface that allows Henry to steer his own course.

"A playground is Ground Zero for every kid," Erin says. "That's where you experience everything as a child, from exploring to discovering to growing. It's an imagination hub where every child deserves to play."

It isn't just Henry who's having fun. Other kids, some of whom may start out a little timid and curious, are soon duly impressed to learn his wheelchair will go seven miles an hour and has turn signals.

Erin gets tearful every time she watches her son on the playground. "When you make it easy to include someone who's different, that's how you change the world."

Henry's family, which includes brother Oliver and dad Nathan, have always loved coming to the Louisville Zoo. Now, they take special pride in knowing their Zoo is a better place for everyone.

Discover more resources on the KultureCity app, including the Louisville Zoo's social story and a list of other sensory inclusive places.

Inclusion benefits everybody

Millions of children and adults live with disabilities in the United States. In Kentucky, one in three adults has a physical or cognitive disability.

In addition to Sensory Inclusive certification, the Louisville Zoo has made several changes to become a more accessible and inclusive community resource:

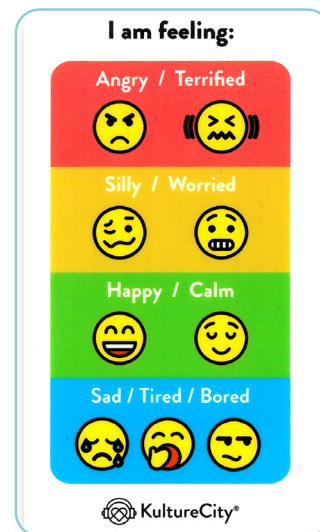
- Installing wheelchair-accessible doors to the HerpAquarium, MetaZoo and Islands pavilion.
- Renovating the Outpost playground to make it fully accessible to children who use wheelchairs and others with special needs.
- Increasing community access memberships and participating with Metro Louisville's Cultural Pass, which provides free

admission to the Zoo every Monday throughout the summer for one child and their adult chaperone.

- Expanding educational and virtual programming with ZooLive, MyBigLittleAdventure.org and Peek-a-Zoo, which includes Spanish and ASL web videos for young children and their families.

The Zoo strives to better the bond between all people and our planet. As part of an overarching initiative to improve access, inclusion and equity, achieving Sensory Inclusive certification means more individuals and families can explore nature, learn about the incredible animals we share the planet with, and create long-lasting memories.

To learn more about the Zoo's inclusion efforts, contact Kelly Grether, Director of Development, at (502) 238-5615 or kelly.grether@louisvilleky.gov.



The care you count on

How do we all adapt to this new reality? At Norton Healthcare, care that's safe and easily accessible has always been our #1 priority. Today, that promise is stronger than ever. From online visits via telehealth to streamlined in-person appointments, you can get the care you need as safely and conveniently as possible. Just like always.

Schedule now or learn more at NortonHealthcare.com.

Look for the 

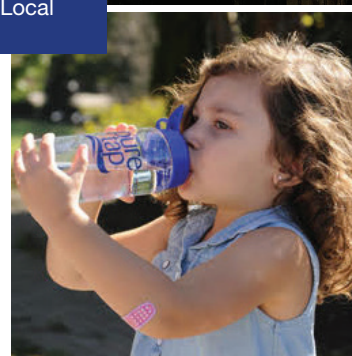
It's a ZOO out there...

Stay hydrated with
Louisville Water
Company.

Bring your reusable
bottle, fill up and
enjoy!

#FillDrinkRepeat | #DrinkLocal


Louisville Water
LouisvilleWater.com



BIG, Beautiful and BUGGY

They're at the Zoo and they're bigger than you!

Saturday, June 25 – Sunday, Sept. 18

This summer, 19 super-sized animatronic bugs bring the incredible world of arthropods to life with a magnified look at what makes these amazing animals so buzzworthy.

Comprising as much as 85% of all known animal species on earth, arthropods — which includes insects, spiders, crustaceans and myriapods — act as pest control, pollinators and provide a food source for amphibians, reptiles, birds and mammals. They even clean up our waste!

This free exhibit reminds us of the BIG role these important creatures play in the dynamic ecology of our planet. You can't miss these IncrediBUGS!




SCIENTISTS HAVE IDENTIFIED OVER 1,000,000 INSECT SPECIES – THAT'S MORE THAN ALL OTHER KNOWN ANIMALS PUT TOGETHER!



POLLINATORS LIKE BEES AND BUTTERFLIES ARE RESPONSIBLE FOR ONE OUT OF EVERY THREE BITES OF OUR FOOD.



ONE OUT OF EVERY FOUR KNOWN ANIMAL SPECIES IS A BEETLE!



INCREDIBUGS

PRESENTED BY **Great Clips®**



AN ANT CAN CARRY 50 TIMES ITS OWN WEIGHT AND A GROUP OF ANTS WILL WORK TOGETHER TO MOVE EVEN HEAVIER OBJECTS!

The Bird Whisperer

Meet Bird
Curator
James
McKinney



Birds of many feathers flock to James McKinney. Since his arrival in May 2021 as the new curator of the bird department, the Zoo has experienced something of an avian baby boom.

Joining Louisville from the AZA-accredited Texas State Aquarium, James has some ideas about how the Zoo can mix things up a bit and expand its bird collection. So, he and his team of nine keepers are getting creative with bird husbandry.

And they're seeing some pretty impressive results.

"For the first time since the Zoo opened, we've bred East African crowned cranes and Inca terns, plus we have four new little penguin chicks," James proudly announces. "It's also been about four years since we successfully paired the Waldrapp ibis."

The Waldrapp ibis?

James laughs. "Maybe they aren't the most striking bird." Then, as if sharing a secret, he adds, "But if you wait — when they come out into the sun, their black feathers have a purple and green iridescence."

There are less than 1,000 of them in the wild.

James wants everyone who visits the Zoo to see birds the way he sees them. More than just increasing

important populations, James is bringing the Zoo's extensive collection to the forefront of the guest experience.

And in the process, he's inspiring a whole new generation of bird-lovers.

Birdwatching at the Zoo

When James describes just how the Zoo is rethinking the bird collection, it helps to have Google open.

"We have a lot of columbiformes, so we're looking at integrating more passerines on the Forest Bird Trail. Then we're bringing tragopans to the Steller's sea eagle exhibit, and I'm hoping we can add a few ratites."

Translation: You're going to see new birds in lots of new places.

For example, the East African crowned cranes, which hadn't been on exhibit for some time, now reside in the bongo yard. As they raise their juvenile offspring,



continued on page 12

the cranes are also getting to know their other new neighbors, the Rüppell's vultures. Keen observers will remember seeing the vultures in the giraffe yard, but for the untrained eye, they were hard to spot.

"They kind of look like rocks when they lie down," James explains.

"They're much easier to see against the green of the bongo exhibit."

Down in the South America zone, the Chilean flamingos are now sharing their pond with Dalmatian pelicans — in Louisville for the first time in over 20 years.

"Birds can get into routines, just like we do. If we change their environment a little, like their social housing or maybe their diet, sometimes that's enough to engage them in their own well-being."

All this bird-mingling is really a "wing-wing" situation. While the birds benefit from an enriched social environment, Zoo guests can watch

as new relationships develop. Keepers and veterinarian staff also have opportunities to observe the birds in naturalistic settings.

"You can see so many different behaviors just in the span of a few moments," James says. "One of the reasons I'm fascinated by birds is that they're a constant challenge. We're always learning something new."

He smiles. "There's a reason why people bird watch."

A Bird's-Eye View

James and his team are finding other new opportunities for the public to see birds from their point of view by introducing several new outreach ambassadors, including a young hyacinth macaw and maybe a penguin or two.

To help prepare the macaw for outreach, keepers are teaching her several behaviors that also help them monitor her health up close, like standing on a t-perch, getting on a scale, and letting them listen to her heartbeat with a stethoscope.

James thinks these beak-to-beak encounters will encourage guests to take even more interest in birds.

"We want people to know



Hyacinth macaw

how dynamic these animals are," James says. "They can easily inspire your passion for nature. And when you're passionate about something, you want to take steps to protect it."

With 284 individual birds representing 70 species — many managed by Species Survival Plans because they are threatened in the wild — there's plenty to be passionate about at the Zoo, and about birds in our own backyards!

"There are things everyone can do," he suggests. "It's always a great idea to plant more native plants in your yard that are really inviting for wildlife. And if you have a cat, maybe build a 'catio' — a screened-in area so they can experience the outdoors without hunting songbirds."

He hopes that visitors to the Zoo will view birds with a new perspective.

"Birds are beautiful and they're so different from us." He pauses for a minute to find the right words.

"They're other-worldly."



Dalmatian pelicans

A Field Guide with James McKinney

Talking with James for an hour is like taking a bird biology class from a trusted friend. Since there are more than 11,000 bird species in the world, he tends to group birds by shared characteristics like morphology, reproduction traits and nesting habits. Here are a few terms he mentioned to watch for:

columbiformes – doves and pigeons

passerines – songbirds, also known as perching birds

tragopans – an Asian relative of partridges and pheasants

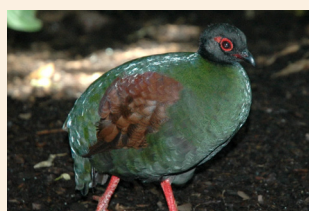
ratites – large, mostly flightless birds like ostriches and emu



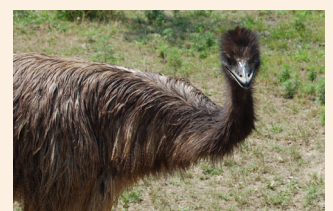
Beautiful fruit doves



Gold-breasted starling



Crested wood partridge



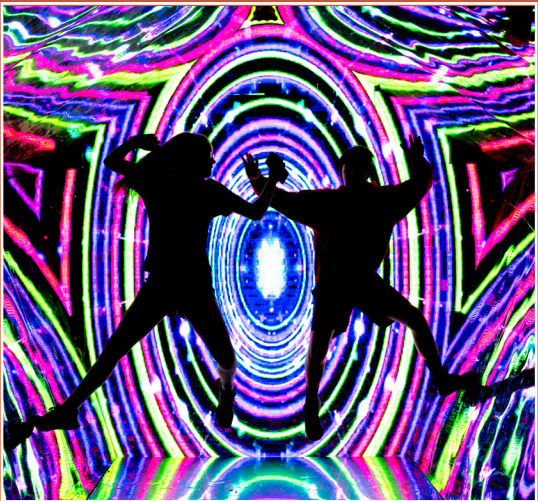
Emu



Wild Lights celebrated its third year of spectacular glowing lantern displays illuminating the pathways through your Zoo. Nightly stage shows returned entertaining guests with lighting-fast mask changes, folk dances and acrobatic displays. This amazing exhibition featured all-new lanterns, like a magnificent 200-foot long phoenix, curling dragon tunnel and technicolor butterflies that filled the Zoo bringing wonder and amusement to guests of all ages. Guests were able to be a part of the magic with thrilling interactive displays, like a color-changing chameleon, dizzying kaleidoscope and illuminated swings and seesaws. Whether you joined us for a multigenerational family night out, a romantic evening stroll with your special someone or a fun girls' night with your best friends, there was something for everyone at Wild Lights!

We hope you enjoyed the glow as much as we did!

Be the first to know! For updates and free giveaways follow us on social media @wildlightslouisville



Sponsored by



CINEMA SAFARI

July 15: National Lampoon's Christmas Vacation

July 29: Elf

August 12: A Bug's Life

September 9: Encanto

Enter the Zoo from 5 – 8 p.m. | Movie starts at sundown

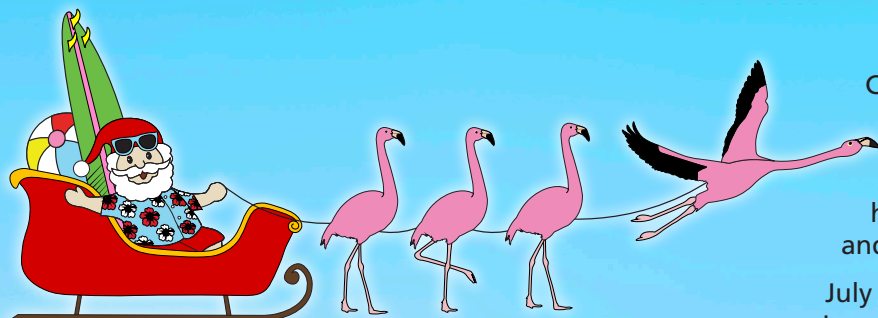
Movie nights are FREE to Louisville Zoo members and only \$5 after 5 p.m. for non-members.

Enjoy a movie under the stars at the wildest theater in town. Watch your favorite movies on our giant inflatable screen. Snacks and other refreshments will be available for purchase. Don't forget to pack your blanket or lawn chairs!

For more information, visit louisvillezoo.org/movies



Presented
by
Great Clips®



SANTA'S Summer SAFARI

Catch a wave and splash on over to join us for Santa's Summer Safari! We're celebrating the holidays this July with special showings of your favorite holiday movies and a weekend of winter and summer fun rolled into one.

July 15 – Cinema Safari presents National Lampoon's Christmas Vacation

July 29 – Cinema Safari presents Elf

July 23-24 – Santa's Summer Safari Weekend

Join us on July 23 and 24, 10 a.m. to 2 p.m. for Santa's Summer Safari weekend. Enjoy games and activities like our snowman obstacle course, summer-themed crafts and ice sculpting demonstrations. You can even catch Santa while he's on vacation to get your wishes in early!

See louisvillezoo.org/santa-summer-safari for more information

Santa's Summer Safari is FREE with Zoo admission.

Cinema Safari is free for Zoo members and \$5 after 5 p.m. for non-members.

Summer Happy Hour!

July 27 | 6:30 pm to 8:30 pm | \$35 entry

Join us for an all-new after-hours event at the Zoo! This 21 and older experience includes a specialty cocktail, savory appetizers and exclusive animal demonstrations. Additional food and beverages available for purchase.

To learn more visit louisvillezoo.org/happyhours



FALL EVENTS **Coming Soon!**

Don't let these *Butterflies n' Blooms* special September events fly by!



- **Flutter Fest:** Learn ways you can help monarch butterflies and other important pollinators. Our butterfly experts will be on hand to teach you more about these beneficial insects and their friends!
- **Monarchs & Mimosas:** Start your day with a refreshing cocktail as you learn how to create your own pollinator garden from our experts. This special 21+ class includes gardening tips and tricks, mimosas and pastries during the class, and your very own milkweed plant to start your habitat at home.
- **Butterflies & Brews:** Join us for this special 21 and older Happy Hour experience featuring cool brews and even cooler bugs. More information coming soon!

Visit louisvillezoo.org/butterfly-exhibit/flutter-fest-2022 for details.



Saturday, November 12 at 8 a.m.

Dash over and join us for the 29th annual Throo the Zoo 5K run/walk. Enjoy the WILDEST 5K in town as you race "Throo" the Zoo alongside some of your favorite Zoo animals! All participants receive a free cotton t-shirt, commemorative finisher medal and a ticket to the Zoo so you can return and enjoy your visit at a leisurely pace.

Register today and save!

Online registration and additional details available at louisvillezoo.org/race



Do you follow us on social media? You could win free stuff! Check us out @ThrooTheZoo



PRESENTED BY
 **NORTON**
AUDUBON HOSPITAL

ADDITIONAL SUPPORT



OUTFRONT



trashformation

A Trash-to-Treasure Art Contest

Powered by LG&E and KU Foundation, Trashformation is an annual contest that invites students in preschool through 12th grade to create art using only recycled items. Congratulations to this year's winners!

Individual Awards

Addy Market
Pre-K

Bodi White
Grades 1 -2

Archie Mitchell
Grades 1-2

Caroline White
Grades 3-5

Sophia Maresca
Grades 6-8

Cameryn Burkhardt
Grades 6-8

Scarlett Rutledge
Grades 9-12

Group Awards

Westport Early Childhood
Center
Pre-K

Highland Presbyterian
Pre-K

Louisville Jewish Day
School
Grades 1-2

Mt. Washington
Elementary
Grades 3-5

Owensboro Innovation
Middle School
Grades 6-8

North Bullitt High School
Grades 9-12



party for the planet

A Month-Long Celebration of the Earth

Powered by **LG&E** and **KU**
Foundation

Additional Support by
WestRock

The Zoo celebrated Earth Month in April with the Party for the Planet: A Month-Long Celebration of the Earth. Guests enjoyed activities virtually and at the Zoo, with special admission discounts thanks to our sponsor, LG&E and KU Foundation.

Thanks to Our Eco-Partners:

Blackacre Nature Preserve & Historical Homestead
Control Creativity
Develop Louisville
Division of Forestry
Falls of the Ohio
Greater Louisville Sierra Club
Jefferson County Soil and Water
JT Chapter of American Chestnut
KAIRE (Kentuckiana Air Education)

Kentucky Conservation Committee
Little Dog's Pawstry Shoppe
Louisville Grows
Louisville Metro Air Pollution Control
The Louisville Nature Center
Louisville Sustainability Council
Passionists Earth and Spirit Center
Public Works Solid Waste
River Metals Recycling
WaterStep

SPONSOR THANKS

Every day, the Louisville Zoo welcomes visitors, supports conservation projects, creates once-in-a-lifetime memories and cares for endangered wildlife. Just like our animals, corporate partnerships with the Zoo come in many shapes and sizes. Your business or organization can partner with the Zoo through many different opportunities, including event or program sponsorships, group events and more! With attendance of over 774,000 this past year, your brand has the potential to reach a significant number of families in the region.

For info on how you can become a Zoo corporate sponsor, contact Kelly Grether at (502) 238-5615 or Kelly.Grether@louisvilleky.gov.

Special thanks to our generous sponsors for these programs:

GET HEALTHY WALKING CLUB

Presented by



ZOOBABIES

Presented by



BACKYARD ACTION HERO GUIDEBOOK

Presented by



INCREDIBUGS

Presented by



FORD FATHER'S DAY

Presented by



ADVERTISING AGENCY OF RECORD



OFFICIAL BEVERAGE OF THE LOUISVILLE ZOO



ZOO PARTNERS



IN-KIND PARTNERS

OUTFRONT/



TICKETS ON SALE NOW! AUGUST 27, 2022

**CRAFT BEER & WINE TASTINGS
FOOD SAMPLES - LIVE ENTERTAINMENT
(21 & OVER)**

LOUISVILLEZOO.ORG/BREW



LIKE US AT
[FACEBOOK.COM/BREWLOUISVILLE](https://www.facebook.com/BREWLOUISVILLE)



friends of
theZOO
LOUISVILLE
Raising Funds to Preserve a Legacy

DONOR THANKS

Gifts received January 1 – March 31, 2022
(All gifts of \$100 or more are listed in this publication)

LOUISVILLE ZOO FUND

Anonymous (4)
Bluegrass Veterinary Vision
Ms. Doris A. Dunn
Mr. and Mrs. Mark E. Edison
Ms. Vilma Fabre
Mr. and Mrs. John M. Fraley
Mr. and Mrs. Roger Gelperin
Mr. and Mrs. James K. Gerrish
Mr. and Mrs. Steven D. Griggs
Mr. and Mrs. Michael F. Hamm
Mr. and Mrs. Richard M. Kaukas
Mr. and Mrs. Thomas Kempf
Mr. and Mrs. Jim Krinock
Mr. and Mrs. Michael J. Kull
Ms. Judith L. Leshner
Mr. and Mrs. Philip A. Lichtenfels
Lorch Family Foundation
Mrs. Susan S. Means
Dr. and Mrs. R. Charles Moyer
Mr. and Mrs. Daniel A. Neie
Ms. Martha Nichols
Ms. Valerie Rich
Malcolm Robertson
Mr. and Mrs. Russell H. Saunders
Max and Ellen Shapira
Mr. and Mrs. Edwin Shelton
Ms. Linda M. Shircliff
Mr. and Mrs. Ralph A. Sneve
Mrs. Linda Speed
Mr. William A. Stone
Mr. and Mrs. Scott Sylvester
Mr. and Mrs. Steven R. Taylor
Mr. Donald L. Tupman
Hugh M. Walker
Mr. and Mrs. James C. Ward
Mr. and Mrs. Mark N. Wilson
Mr. and Mrs. David A. Young
Dr. Janice W. Yusk

SUSTAINER SOCIETY

Mr. George R. Bailey and Ms. Porter Watkins
Mr. and Mrs. David Blandford
Mr. Walter D. Clare
Mr. Gene P. Gardner
Harriet M. Jones Fund
Mrs. Deborah C. King
Mr. and Mrs. Neil D. MacDonald
Ms. Victoria Macke
Marsh & McLennan Companies
Marshall Family Foundation, Inc.
Mrs. Evelyn F. Ott
Mr. Steve Pazienza
Mr. and Mrs. Joe Pusateri
Mrs. Robin Rogneby
Pattie Dale and Jim Tye
Mr. and Mrs. Michael B. Vairin
Mr. and Mrs. Jim Watkins
Mrs. Maida Wood

LOUISVILLE ZOO FOUNDATION UNRESTRICTED DONATIONS

Mr. Cleo Battle
Mrs. Deborah C. King
Mr. and Mrs. Neil D. MacDonald
Mr. Steve Pazienza
Mrs. Linda Speed
Dr. Erica Tolar
Pattie Dale and Jim Tye

CONSERVATION

Anonymous
Eco-Cell
Louisville/Jefferson County Metro Government
Service Systems Associates

LOUISVILLE ZOO FOUNDATION RESTRICTED DONATIONS

Lincoln Memorial University (LMU)

ANIMAL AMBASSADOR PROGRAM – IN HONOR OF JOHN WALCZAK

Ms. Marcelle T. Gianelloni
Ms. Kelly Grether
JD and Beth Malcom
Mr. and Mrs. Neil D. MacDonald

ANIMAL AMBASSADOR PROGRAM

Ginkgo Fund
Mr. Steve Pazienza
Ms. Jeanne D. Vuturo

ZOOKIDS

Mr. Walter D. Clare

IN-KIND DONATIONS

PriceWeber Marketing Communications, Inc.

TRIBUTES

In memory of Cyril L. Allgeier
Mrs. Mary A. Allgeier
In memory of Jane Bradley
Russ Hamblen
In memory of Maurice J. Buchart, Jr.
Anonymous
Ashley Adams

Mr. and Mrs. Rob Bader
Nadine Brewer
Mrs. Gina W. Brown
Kathy and Jim Gardner
Mr. and Mrs. Larry D. Heck
Mr. and Mrs. John B. Mattingly
Michelle Parker
Jillian Rogers
Ms. Eunice W. Rice
Mr. and Mrs. Stephen Sebree
Mr. William A. Stone

In memory of Kathy Durbin
Yum! Brands, Inc.

In memory of Dr. A.J. Eilers III
Mr. and Mrs. Robert Montgomery

In memory of Timothy G. Fleming
Mr. and Mrs. Mike D. Fautz
Maggie Taylor

In memory of Debbie Meyer Goldstein

Linda Becker
Rose Drennen
Mr. and Mrs. Stephen F. Greb
Sidney and Barbara Issacs Hymson
Marcia Storch

In memory of Terry Russell Lampton

Mr. Eric Clark
Steven D. Cook
Beverly Dawson
Robert A. Diamond
Ms. Kelly Grether
Ms. Stephanie A. Moore
Mr. and Mrs. Brian F. Ruffini
Mr. and Mrs. Phillip J. Stuecker
Richard Wimberley

In memory of Betty White Ludden

Mary Afton and Jeff Payne
Cathy Anderson
Anonymous (3)
Maria Allgeier
Regina Betts
Kayla and Mary Bluthardt
Ms. Vicki D. Brabandt
Ms. Joan Brotzge
Dylan Brown

Kristen Brown
Susan Brown
Andrea Burdick
Michelle Byrd
Dara Campbell
Ms. Maureen Chambers
Kasey Chitwood
Ms. Tammy C. Clements
Heather Collard
Ashley Copeland
Christine Delaney
Anita Dennis
Ms. Sabrina Denny
Melissa DePlanche
Susan Durham

Sherri Eblen
Jennifer Edelen
Sarah Elam
Maria Garcia
Nevina Harrell
Mr. and Mrs. Allan Harvey
Dana Hawk
Tay Healy
Mr. and Mrs. J. Michael Johnson
Casandra Lucas
Ryan Lukoszyk
Christopher Lynch
Martha Marmet
Ellen Means
Margaret McGrath
Ms. Carrie Monday
Nicole Morris
Savannah Newton
Barkley Payne
Jennifer Perry
Virginia Pluta
Regina Pyles
Whitney Reed
Ms. Janet Roberts
Theresa Shell
Holly Sibray

Mr. and Mrs. Myron J. Smith
Deborah Spurlock
Belinda Stone
Kathy Stout
Mr. and Mrs. David Taylor
Debbie Temple
Margaret Tellman
David Valiquette
Stephanie Valsted
Marjorie Vertrees
Cathy Weaver
Deborah Whittenberg
Donna M. Woods
David Wortham
Rachel Yates

In memory of Robin McNeill
Mr. Stephen H. McNeill and Mrs. Mary J. McNeill

In memory of Finis R. Price
Ms. Sandra Price

In memory of Jane Richards Bradley
Jenifer Chalk

In memory of Geri Roberts
LouTate Foundation

In memory of Babette Schiller
Rochelle Zegart

In honor of Linda K. Smith
Ms. Holly H. Smith

In honor of Dina Vuturo
Karen S. Sullivan

In honor of John Walczak
David and Ann Worland



Boo at the Zoo

PRESENTED BY

meijer

Louisville's favorite costume party returns with more merry, not scary fun! Meet some of your favorite characters, enjoy larger-than-life themed areas, and children 11 and under can trick-or-treat for some of their favorite treats throughout the Zoo!

Tickets available starting August 1 at 10:00 a.m.
at louisvillezoo.org/Boo.



Coming Soon!